

Councilmember Oliverio Review Meeting

February 12, 2009 – 3:30pm

Kirk Vartan – kirk@NorthOfForest.org
Raymond Stovich – stovich@comcast.net
www.NorthOfForest.org

Agenda:

- **Solution for Keeping Signal at Forest Ave (west) and Winchester Blvd.**
- **Insuring Forest Ave. Is Not an Access Point for Any Development**

A Win/Win/Win Solution:

San Jose Neighborhood Goal:

Keep the Forest (west) light

City of San Jose Goal:

Keep any modifications safe and efficient

Developer Goal:

Have a signalized intersection for their housing development

Solution meets all requirements!

Winning Solution:

- **Westfield is moving the Dorcich light already, so align the public street Worthington with it (the main entrance)**
 - **This becomes a four-way traffic light**
- **The main entrance of the development is moved to the southern entrance**
- **The layout is basically mirrored**
- **The secondary entrance (now the north entrance that is aligned with Forest Ave. (east)) becomes a right-in/right-out**

Winning Solution:

- **Public road is now next to commercial buildings, not residences**
- **Safer north entrance. There have been numerous accidents at Winchester/Forest Ave (east). A solid and decorative barrier can be created to insure safety**
- **Both Valley Fair and Santa Clara Gardens work together**
- **Winchester corridor is coordinated**

Dorcich/Winchester

Today



Veteran's
Services

Wells Fargo

Winchester Blvd.

Dorcich Ave

Dorcich/Winchester
(Current Plan)

Veteran's
Services

Wells Fargo

New light

Old light
removed

Dorcich Ave



**Dorcich/Winchester
(Current Plan)**

**Veteran's
Services**

Wells Fargo

**Instead of moving
intersection here.....**



Dorcich Ave



Dorcich/Winchester
(Alternative
Proposal)

Veteran's
Services

Wells Fargo

Move intersection
here, allowing both
SummerHill and
Westfield to utilize it

Dorcich Ave

Current View



Good Year

Valley Fair
Parking Lot

Wells Fargo

Veteran's
Services

Overlay with Senior Housing Development





Make north development entrance a right-in/right-out only (pork chop)

Make primary development entrance (signalized)

Move Westfield light an additional 150 feet north

Westfield traffic signal being relocated (new location)

Good Year

Valley Fair Parking Lot

Veteran's Services

Wells Fargo

Forest Ave (west/east)

Proposed Solution, keeping light



Forest Ave (west)

Light remains

Northern entrance
right-in/right-out

Forest Ave (east)

No Access from Forest Ave

- Currently, the proposed one acre park in Santa Clara will have an emergency access road in it; Let's make sure that never changes
- Can San Jose mandate that Winchester will be the only access to the BAREC development if it proceeds? Specifically, no vehicular access to the site is allowed from Forest Avenue.
- We don't want anyone "forgetting" that the only approved access to the site is on Winchester

Action: Can Councilmember Oliverio execute this request with the City of San Jose on behalf of our neighborhood?

Example of Emergency Access

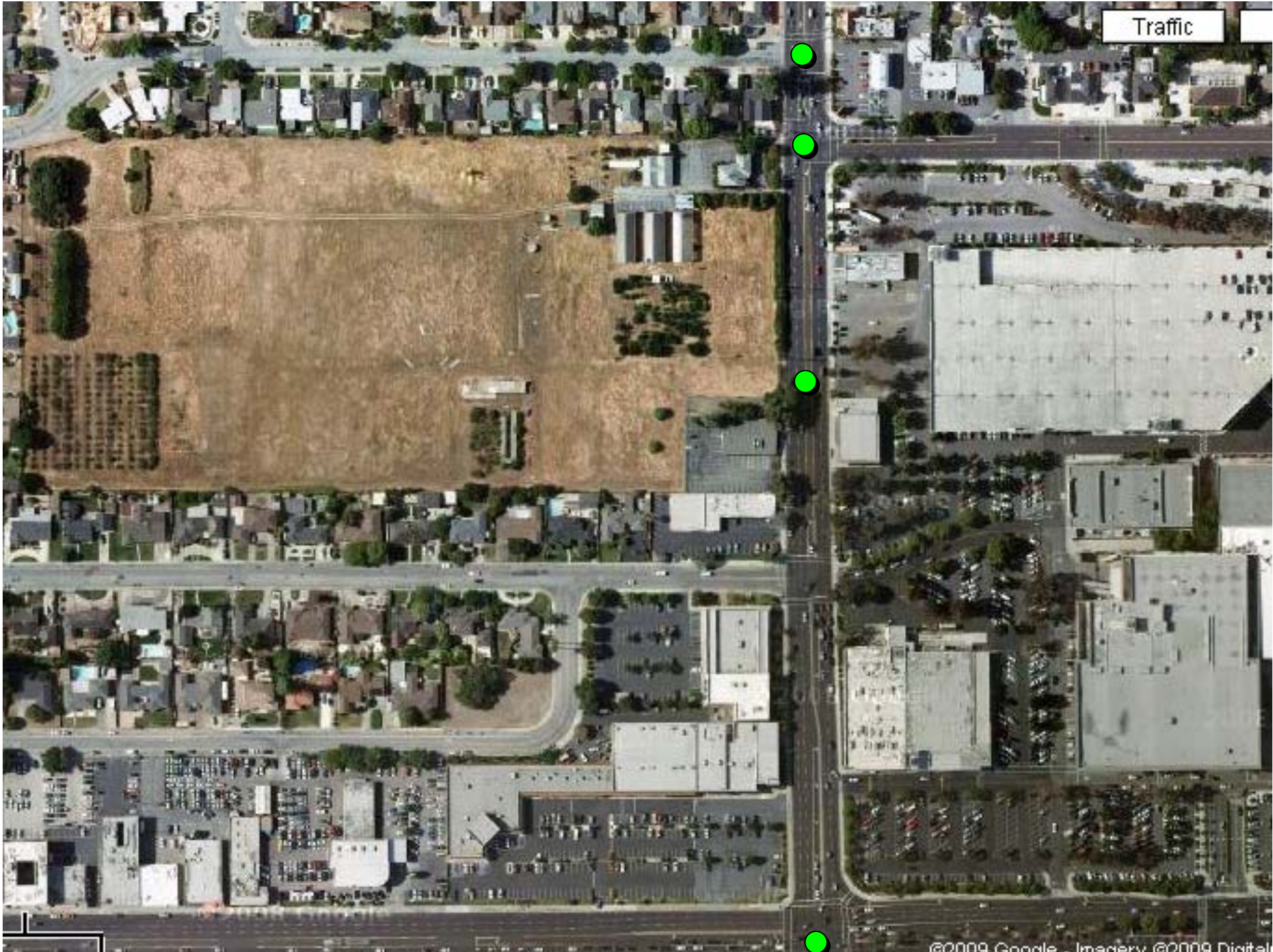


Next Steps

- **Work with City Staff on proposal**
- **Councilmember Oliverio to represent our needs**
 - 1. Proposed win-win-win solution**
 - 2. No Forest access**
- **Councilmember Oliverio at next neighborhood meeting**

Issues with Removal of Light

- Reduced access to neighborhood
- Increased cut-through traffic
- Reduced value of home
- Safety issues
- Reduced quality of life
- Daily inconveniences and problems with neighborhood



Traffic